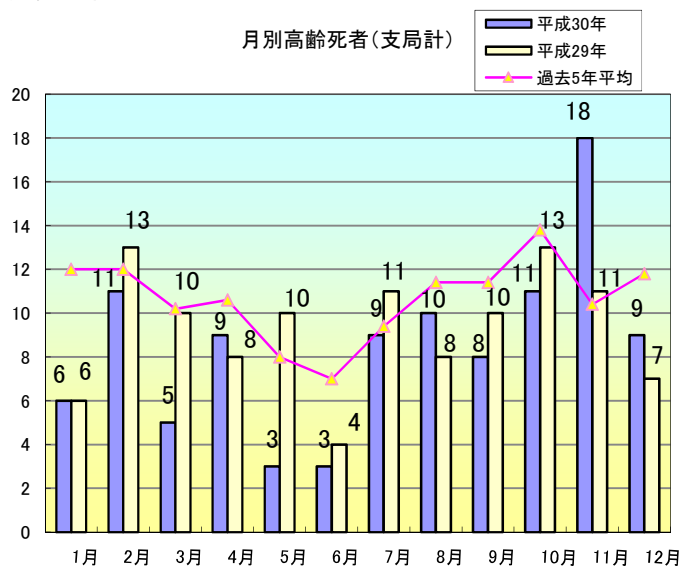
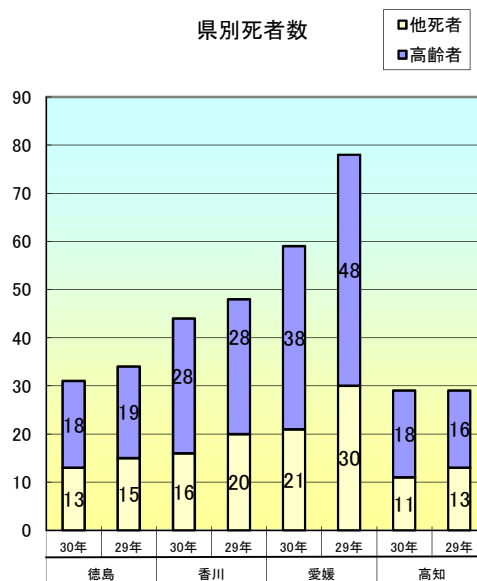


高齢者の交通死亡事故の特徴

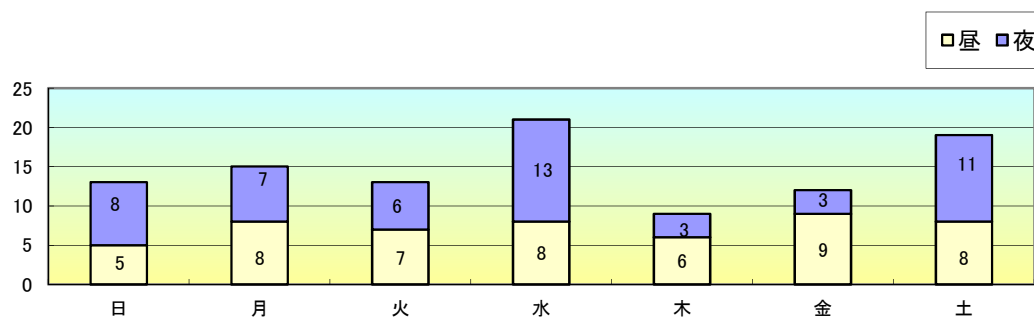
1 月別発生状況



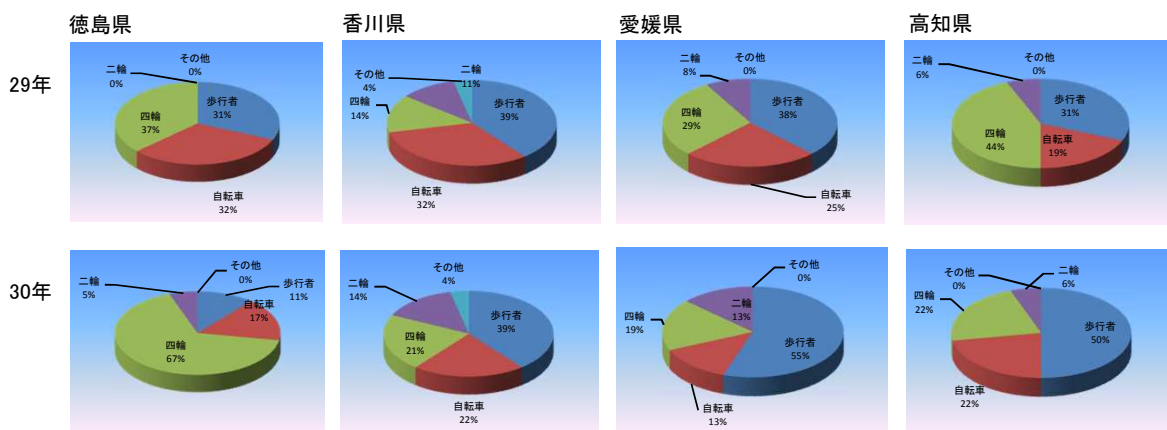
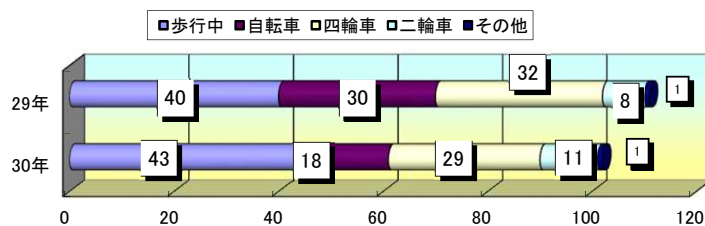
県別死者数



2 曜日別・昼夜別発生状況

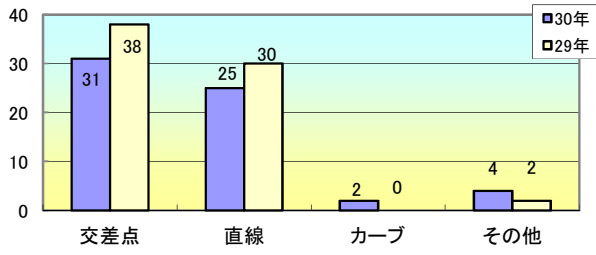


3 状態別死者数(各県別)



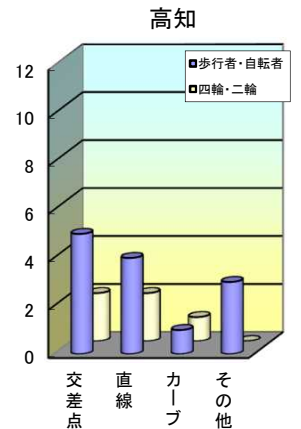
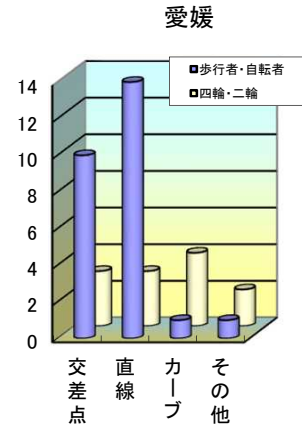
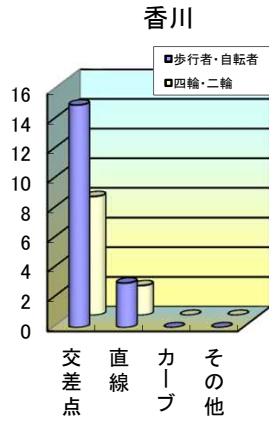
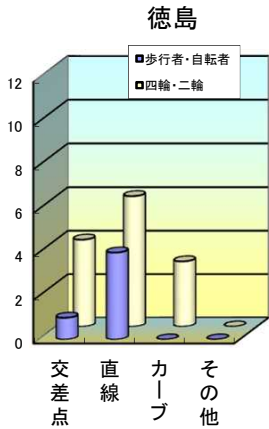
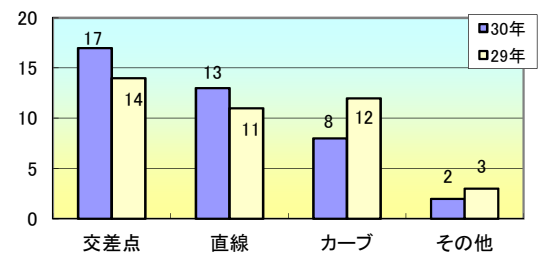
4 道路形状別死者数(各県別)

(1) 歩行者・自転車・その他の死者

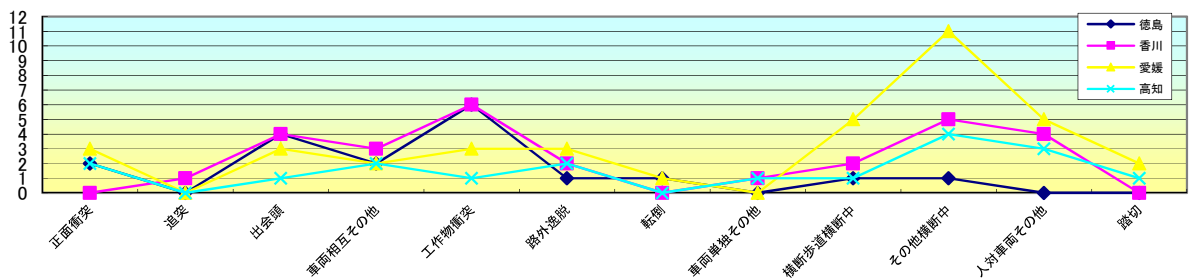
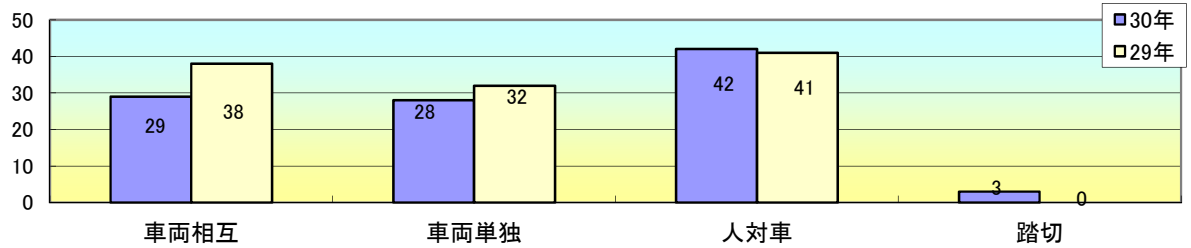


※交差点での事故が多い

(2) 四輪車・二輪車の死者



5 事故類型別死者数(各県別)



6 高齢者第1当事者の違反別発生件数

