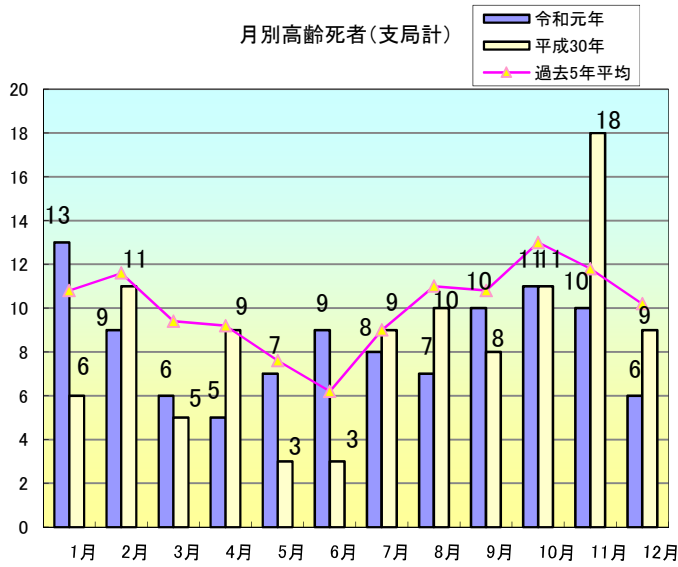
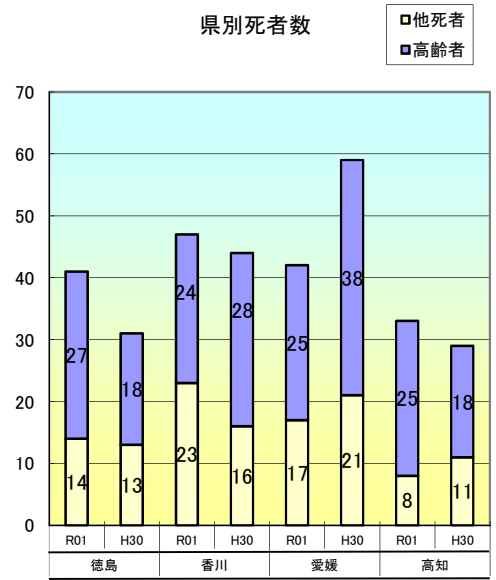


高齢者の交通死亡事故の特徴

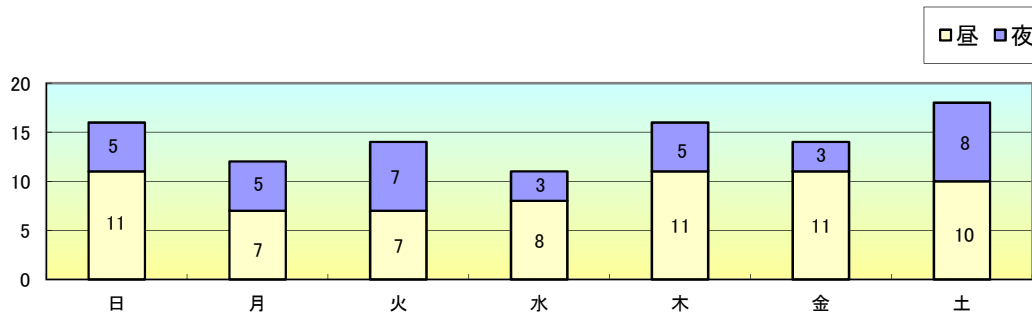
1 月別発生状況



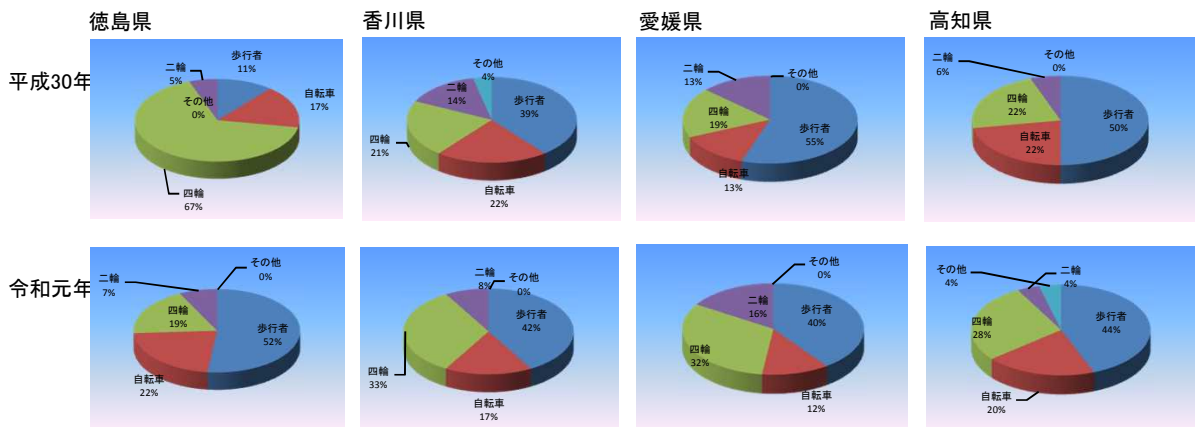
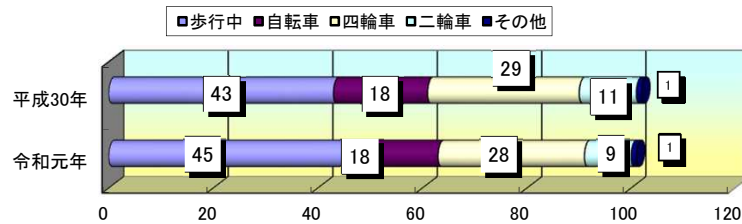
県別死者数



2 曜日別・昼夜別発生状況

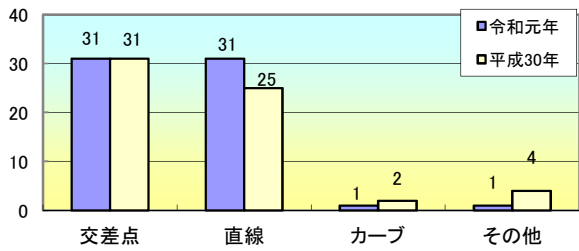


3 状態別死者数



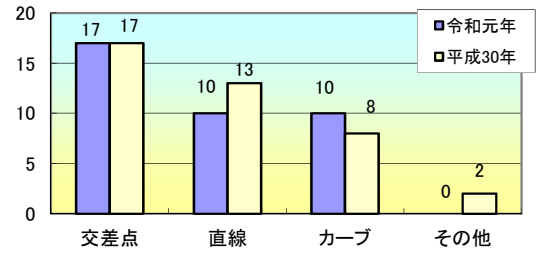
4 道路形状別死者数

(1) 歩行者・自転車・その他の死者

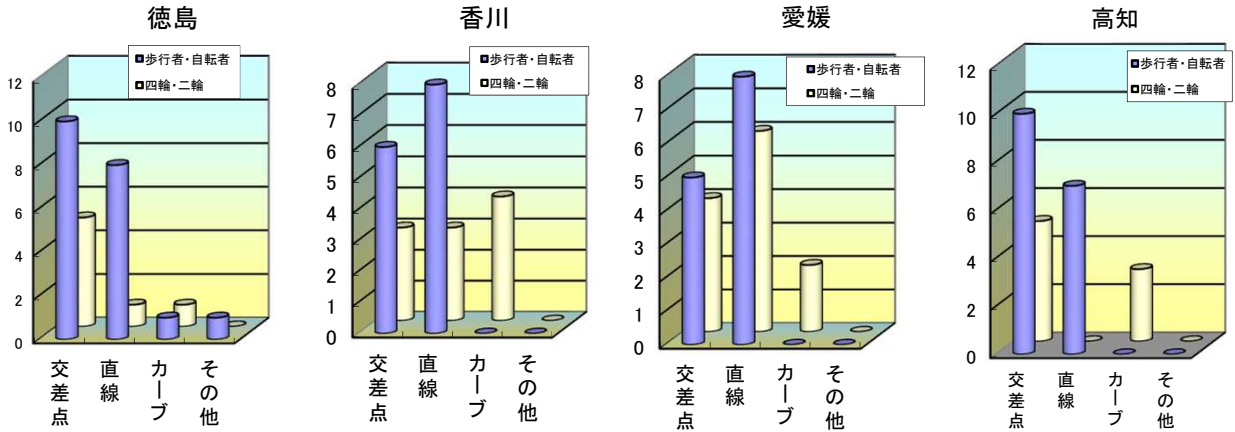


※交差点・直線での事故が多い

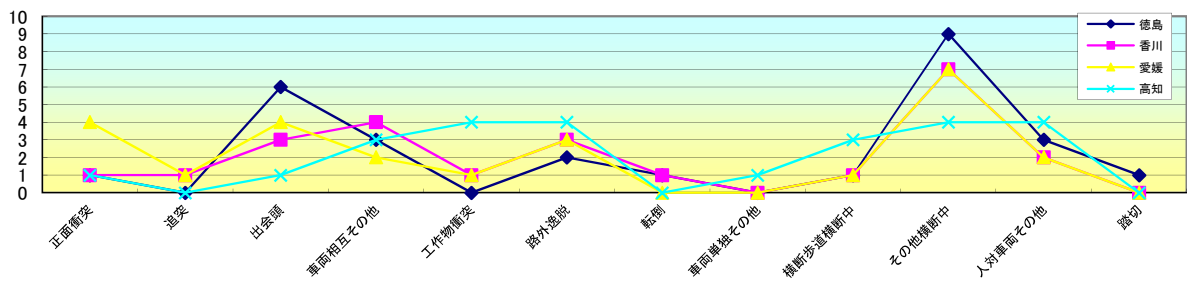
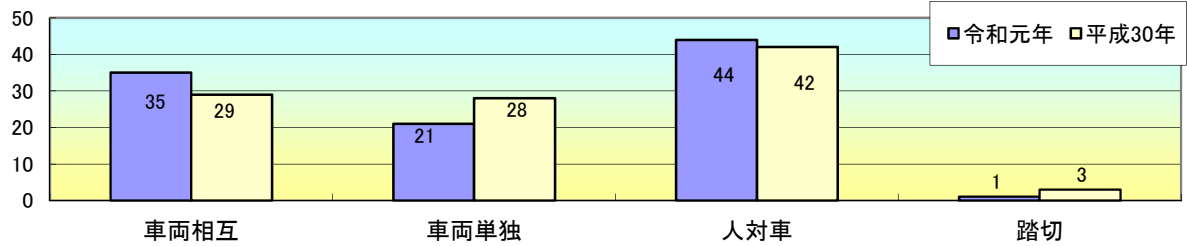
(2) 四輪車・二輪車の死者



※交差点での事故が多い



5 事故類型別死者数



6 高齢者(第1当事者)の違反別発生件数

